



World up
Keep
Climbing

INTERNATIONAL FEDERATION OF **SPORT CLIMBING**
www.ifsc-climbing.org

IFSC CLIMBING WORLD CUP

2019 IFSC CLIMBING

WORLD CUP

LEAD

BRIANCON - FRANCE

19 - 20 JULY 2019

ORGANISED BY:



Event Organiser's Partners:

IFSC Partners:





World up
Keep
Climbing

INTERNATIONAL FEDERATION OF **SPORT CLIMBING**
www.ifsc-climbing.org

IFSC CLIMBING WORLD CUP

ORGANISATION

French Federation of Sport Climbing and Mountaineering / Briançon Escalade

Organiser Website: www.ffme.fr

Contacts Local Organiser:

Event Organiser:

Franck Prigent / direction@mondial-escalade.fr

Sport Manager :

Vincent Caussé / v.causse@ffme.fr

Media:

Florian Kunckler / f.kunckler@ffme.fr

Jean Gaboriau / communication@mondial-escalade.fr

Contact National Federation:

Vincent Caussé / v.causse@ffme.fr / +336.87.33.71.59

REGISTRATION

IMPORTANT CHANGE, IFSC RULES

- **DEADLINE:** The deadline for team registration is **15 days** before event 1st day at 23.59 CEST: **July 4th, 2019**
- **START LIST:** Registered competitors not confirmed as present **July 18, 2019** during the registration time will be deleted from the Official Starting List.
- **CONFIRMATION OF ATTENDANCE FOR DELAYED ARRIVAL:**

In case a team is not able to make the registration in time due to flight delays or other unpredictable reasons, please contact the IFSC Technical Delegate:

FABRIZIO MINNINO: +393 388 622 410 / fabrizio.minnino@ifsc-climbing.org

Event Organiser's Partners:

IFSC Partners:





World up
Keep
Climbing

INTERNATIONAL FEDERATION OF **SPORT CLIMBING**
www.ifsc-climbing.org

IFSC CLIMBING WORLD CUP

TRAVEL DETAILS

- Visa:

If you need invitations for visa, please fill the form at the following address:

<http://www.ffme.fr/visa>

- How to get there:

<https://www.serre-chevalier.com/en/summer/about-the-valley/getting-here/>

ACCOMMODATION

<http://www.cippa.com/>

<http://www.serre-chevalier.com/en/summer/>

COMPETITION VENUE

Competition is held outside: **PARC DES SPORTS – avenue Jean Moulin 05 100 Briançon**

IMPORTANT NOTICE =

The Opening ceremony, hold at the competition venue, is mandatory for

- One athlete per team (flag bearer)
- The 8 first men and women of the 2019 world cup lead ranking present in Briançon

Event Organiser's Partners:

IFSC Partners:

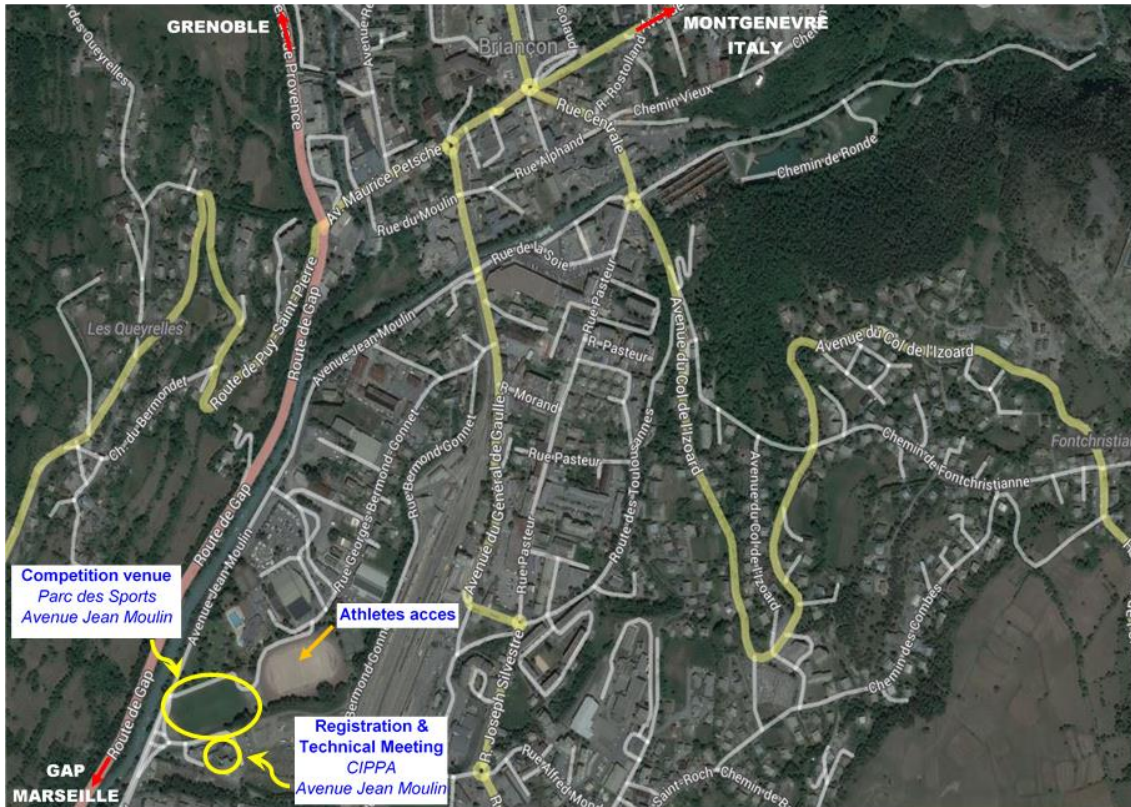




World up
Keep
Climbing.

INTERNATIONAL FEDERATION OF **SPORT CLIMBING**
www.ifsc-climbing.org

IFSC CLIMBING WORLD CUP



Event Organiser's Partners:

IFSC Partners:





World up
Keep
Climbing

INTERNATIONAL FEDERATION OF **SPORT CLIMBING**
www.ifsc-climbing.org

IFSC CLIMBING WORLD CUP

IFSC OFFICIALS

- IFSC Technical Delegate: Fabrizio Minnino (ITA)
- IFSC Jury President: Evgeni Levin (RUS)
- IFSC Judge: Andres Seco Hernandez (ESP)
- IFSC Chief Route Setter: Carles Brasco (ESP)
- IFSC Route Setters: Leonardo Di Marino (ITA), Jan Zbranek (CZE)

PROVISIONAL PROGRAMME (LOCAL TIME) – UPDATED 18/07

Please note that the Semifinal round can be moved on Saturday morning, in case registration numbers will not allow to run both Qualifications and Semifinals on the same day.

Thursday 18 July		
	17.00-18.30	Registration
	19.00	Technical Meeting
Competition Venue	19.45	Opening ceremony Mandatory for: - One athlete per team (flag bearer) - The 8 first men and women of the 2018 world cup lead ranking present in Briançon
Friday 19 July		
	06.30	Warming Zone Open
	08.30-15.00	Qualification Men and Women
	17.00-18.30	Isolation Zone Men & Women Semi- Finals
	19.00	Observation Women

Event Organiser's Partners:

IFSC Partners:



Earth Corporation



JAPAN AIRLINES





World up
Keep
Climbing

INTERNATIONAL FEDERATION OF **SPORT CLIMBING**
www.ifsc-climbing.org

IFSC CLIMBING WORLD CUP

	19.10	Observation Men
	19.30-22.00	Semi-Finals Men & Women
Saturday 20 July		
	17.30-18.30	Isolation Zone Men Final
	19.30	Athletes Presentation and observation time followed by Men Final
	19.00-20.00	Isolation Zone Women Final
	21.00	Athletes Presentation and observation time followed by Women Final
	22.00	Award Ceremony

Event Organiser's Partners:

IFSC Partners:

